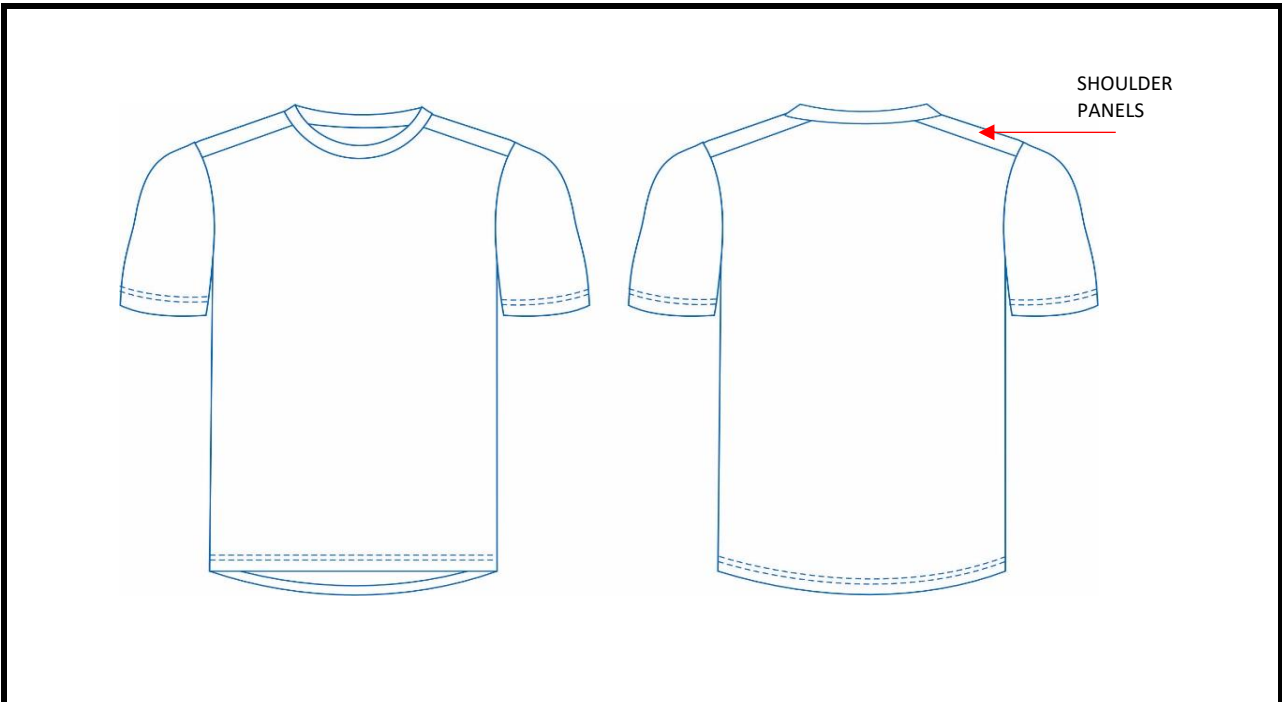


STYLE NAME	NB UNISEX SS TEE	
STYLE NUMBER	P925	NB APPROVED STYLE
CATEGORY	MEN	DATE: 12/09/2022
MANUFACTURER	(HS/BA)	



FABRICS	TYPE / COMPOSITION	COLOURWAYS
MAIN FABRIC	100% POLYESTER (K29)	
CONTRAST		
LINING		

TRIMS	UNITS	NOTES

LABELS	UNITS	
COO LABEL	1	
LOGO LABEL	1	
CARE LABEL	1	

SPECIAL DETAILS
SUBLIMATED OR CUT & SEW

NOTES

SAMPLE SIZE: M

STYLE NAME	NB UNISEX SS TEE		
STYLE NUMBER	P925	NB APPROVED STYLE	
CATEGORY	MEN	DATE: 12/09/2022	
MANUFACTURER	(HS/BA)		

POINTS OF MEASUREMENTS	MEASUREMENTS IN CM										
	REF	XS	S	M	L	XL	2XL	3XL	4XL	5XL	
NECK WIDTH (SEAM TO SEAM)	A	18.5	19	19.5	20	20.5	21	21.5	22	22.5	
BACK NECK DROP (LEVEL TO SEAM)	B	2.5	2.5	2.5	2.5	2.5	2.5	2.5	2.5	2.5	
FRONT NECK DROP (LEVEL TO SEAM)	C	10	10.5	11	11.5	12	12.5	13	13.5	14	
NECK WIDTH (MIN STRETCHED)	D	54	56	58	60	62	64	66	68	70	
COLLAR COLLAR HEIGHT AT CF	E	1.5	1.5	1.5	1.5	1.5	1.5	1.5	1.5	1.5	
SHOULDER BREADTH	F	38	40	42	44	46	48	50	52	54	
1/2 CHEST (2.5CM BELOW ARMHOLE)	G	49	51.5	54	56.5	59	61.5	64	66.5	69	
1/2 ARMHOLE CIRC	H	26	27	28	29	30	31	32	33	34	
LENGTH - FRONT LONG BODY LENGTH (FROM HPS TO HEM)	I	70	72	74	76	78	80	82	84	86	
LENGTH- BACK LONG BODY LENGTH (FROM HPS TO HEM)	J	73	75	77	79	81	83	85	87	89	
1/2 HEM	K	48	50.5	53	55.5	58	60.5	63	65.5	68	
HEM & SLEEVE HEM HEIGHT	L	2	2	2	2	2	2	2	2	2	
SLEEVE LENGTH (FROM CERVICAL TO HEM INCL. CUFF) - SHORT	M	41	42	43	44	45	46	47	48	49	
SLEEVE OPENING - SHORT	N	18	19	20	21	22	23	24	25	26	
1/2 SLEEVE WIDTH - SHORT	O	22	23	24	25	26	27	28	29	30	

