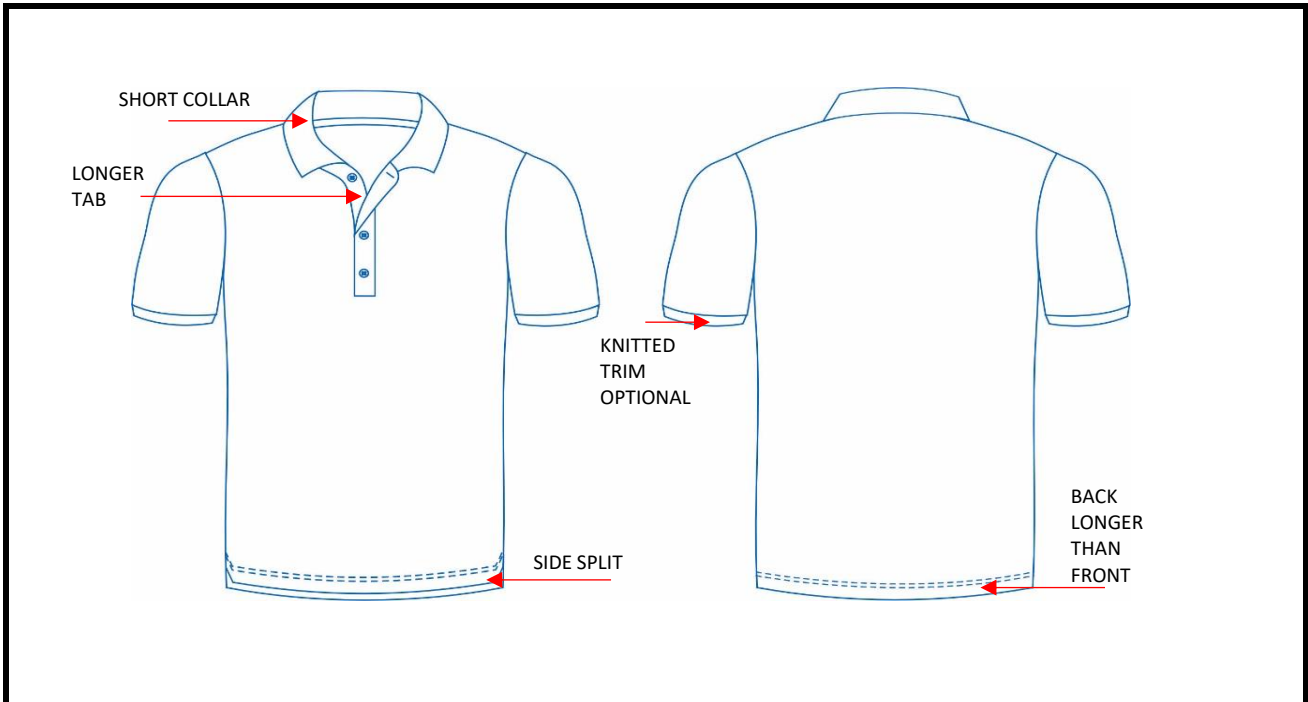


|              |                    |                   |           |
|--------------|--------------------|-------------------|-----------|
| STYLE NAME   | NB SS CRICKET POLO |                   |           |
| STYLE NUMBER | P1049              | NB APPROVED STYLE |           |
| CATEGORY     | YOUTH              | DATE:             | 5/01/2022 |
| MANUFACTURER | (HS/BA)            |                   |           |



| FABRICS     | TYPE / COMPOSITION | COLOURWAYS |
|-------------|--------------------|------------|
| MAIN FABRIC | 100% POLYESTER     |            |
| CONTRAST    |                    |            |
| LINING      |                    |            |

| TRIMS              | UNITS     | NOTES |
|--------------------|-----------|-------|
| 12mm 4 HOLE BUTTON | 3+1 SPARE |       |
|                    |           |       |
|                    |           |       |

| LABELS     | UNITS | NOTES |
|------------|-------|-------|
| COO LABEL  | 1     |       |
| LOGO LABEL | 1     |       |
| CARE LABEL | 1     |       |

| SPECIAL DETAILS       |
|-----------------------|
| SHORT COLLAR          |
| LONG TAB              |
|                       |
| NOTES                 |
|                       |
|                       |
|                       |
|                       |
| <b>SAMPLE SIZE: M</b> |

STYLE NAME NB SS CRICKET POLO

STYLE NUMBER P1049

NB APPROVED STYLE

CATEGORY YOUTH

DATE: 5/01/2022

MANUFACTURER (HS/BA)

| POINTS OF MEASUREMENTS         | MEASUREMENTS IN CM |      |      |          |      |      |      |      |      |  | GRADE RULE | TOTAL |
|--------------------------------|--------------------|------|------|----------|------|------|------|------|------|--|------------|-------|
|                                | REF                | 2    | 4    | SAMPLE 6 | 8    | 10   | 12   | 14   | 16   |  |            |       |
| NECK WIDTH seam to seam        | A                  | 15   | 15.4 | 15.8     | 16.2 | 16.6 | 17   | 17.4 | 17.8 |  | 0.5        |       |
| BACK NECK DROP level to seam   | B                  | 3    | 3    | 3        | 3    | 3    | 3    | 3    | 3    |  | 0          |       |
| FRONT NECK DROP level to seam  | C                  | 7.7  | 7.95 | 8.2      | 8.45 | 8.7  | 8.95 | 9.2  | 9.45 |  | 0.5        |       |
| SHOULDER BREADTH               | D                  | 28   | 30   | 32       | 34   | 37.7 | 39.7 | 41.7 | 43.7 |  | 2          |       |
| CHEST CIRC 2.5cm below armhole | E                  | 69   | 74   | 79       | 86   | 94   | 98   | 101  | 104  |  | 2.5        |       |
| FRONT LENGTH fm HSP            | F                  | 47   | 49   | 51       | 55   | 59   | 62   | 65   | 68   |  | 2          |       |
| BACK LENGTH fm HSP             | G                  | 49   | 51   | 53       | 57   | 61   | 64   | 67   | 70   |  | 2          |       |
| HEM CIRC                       | H                  | 67   | 72   | 77       | 84   | 92   | 96   | 99   | 102  |  | 2.5        |       |
| ARMHOLE                        | I                  | 37   | 40   | 43       | 45   | 47   | 49   | 51   | 53   |  | 1          |       |
| SLEEVE LENGTH from a/h         | J                  | 29.5 | 31.5 | 33.5     | 35.5 | 38   | 40   | 41.5 | 43   |  | 1          |       |
| 1/2 SLEEVE OPENING short       | K                  | 28   | 29   | 30       | 31   | 32   | 33   | 34   | 35   |  | 1          |       |
| COLLAR HEIGHT - BK             |                    | 5    | 5    | 5        | 5    | 5    | 5    | 5    | 5    |  | 0          |       |
| COLLAR HEIGHT - FRONT          |                    | 5    | 5    | 5        | 5    | 5    | 5    | 5    | 5    |  |            |       |

